

**Landair**  
Surveys



# Capability statement

Quality spatial data capture and support for:

Architecture  
and heritage

Government  
planning and  
infrastructure

Property  
consulting

Landfill  
operations

Construction  
and engineering

[landair.com.au](http://landair.com.au)

# Precision data. Powering progress.

Landair Surveys delivers accurate surveying across the east coast of Australia, with rapid deployment of experts and a high standard of quality control.

**2,000+**  
successful  
partnerships

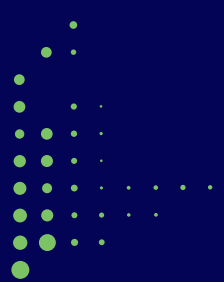
**50+**  
years of  
surveying

**5,000+**  
projects  
delivered



*At Landair Surveys, we're committed to building lasting relationships, not just completing jobs. Whether it's a simple survey or a complex heritage project, our team gives you the precise data and advice you need to move forward confidently. We focus on the details that matter in your industry, to ensure your project's success."*

**Ray Cox** | Director



## Our focus industries.



### Architecture and heritage

We know how important it is for architects to understand every detail of their projects – on coursework and decorative elements – down to the millimetre. Landair Surveys **makes accuracy a priority**, leveraging our expertise on modern and heritage projects to deliver the data that architects need and can always trust.



*Landair has a lot of experience with heritage. They provide a level of detail that others don't."*

**Max Bracher** from Lovell Chen

---



### Government geospatial imagery

Aerial imagery for government clients means facing unique challenges – from meeting strict quality standards to addressing regional airspace restrictions. Landair brings **deep experience and proven reliability** to government imagery projects, delivering data that's ready to inform key decisions.



*Landair do what they say. When they mobilise to a site, they're there until the work's done."*

**Amanda Secker** from the Department of Resources, QLD

---



### Government infrastructure

Landair's team of licensed surveyors brings extensive local knowledge, legal expertise and technical proficiency to every project. As an incumbent on **numerous government supply panels**, we're familiar with the approval processes and specific standards needed for public sector projects.



*Landair are easy to work with. They keep you updated and give you genuinely useful advice."*

**Paul Goodison** from the Yarra Ranges Council

---



## Property due diligence

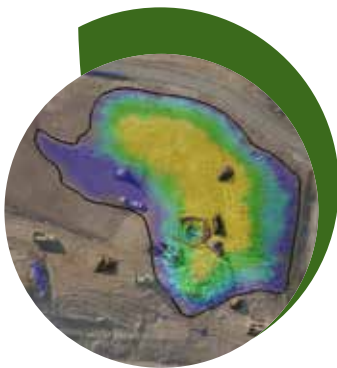
With licensed surveyors and accredited drone pilots, Landair Surveys is equipped to **handle complex and multi-state projects**. We're experienced in managing sensitive and confidential surveys, ensuring that every project receives the precise and reliable data essential for informed decisions.



*Report accuracy is our number one priority, and the quality we get from Landair is exceptional."*

**Simon Freeth** from CBRE

---



## Landfill operations

Managing a landfill site has specific challenges, from integrating historical data to monitoring for safety compliance. Landair goes beyond data collection for landfill surveying. We prioritise clear, **accessible presentation and practical insights** to improve day-to-day site operations.



*I'm very pro-Landair. I won't go anywhere else. They know what landfill managers need."*

**Nino Fresca** from The Barro Group

---



## Engineering and construction

We understand the demands of construction sites: high accuracy, problem-solving and fast response times are vital to keep projects on track. Landair's years of experience in construction surveying means that your team can always have the data it needs to **minimise errors** and keep your project moving.



*Landair has been an incredible partner for our business. We needed a custom solution for a project with a tight timeline, and they delivered exactly what we needed."*

**Armin Ghamami** from 4Site Group

***For more on how we support your industry, see the corresponding Sector Guide.***

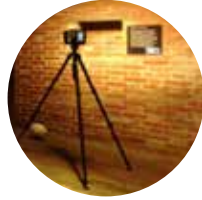
# Our core surveying capabilities.

Landair's goal is to empower you to **make informed decisions** and foster innovation with precise and high-quality spatial data solutions – including:



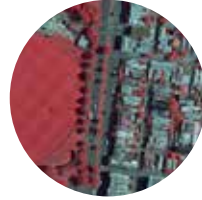
## Aerial mapping

Using drones or aircraft to capture high-resolution imagery for detailed maps.



## 3D reality capture

Creating precise 3D models using advanced scanning technologies.



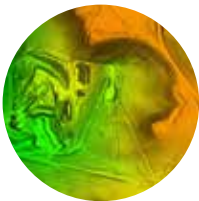
## Multi-band orthomosaics

Generating georeferenced maps with multiple spectral bands for enhanced analysis.



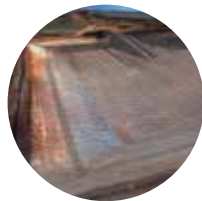
## Photo-grammetry

Extracting accurate measurements and models from photographic imagery.



## Digital elevation and surface models

Developing 3D representations of terrain and surface features for analysis and planning.



## Volume calculations

Providing precise measurements of material volumes for excavation, stockpiles and construction.



## Boundary definition

Establishing accurate property boundaries for legal and engineering requirements.



## Topographic and existing condition plans

Delivering detailed plans that show land contours, features and current site conditions.



# Our proud legacy.

With a history stretching back to 1974, Landair Surveys has seen ongoing success by combining **reliable data capture** in aerial and terrestrial surveying with **evolving technology** and experience across multiple industries.

You're right to expect more from your surveying partner. We want you to be confident in our data and in us as your spatial experts.



Quality is our currency.  
**We're better than the rest.**



Time is value.  
**We act fast.**



No challenge is too great.  
**We'll find the solution.**



Relationships matter.  
**We do what we promise.**



# Our difference in surveying.

Having a surveying partner that specialises in your area, and has decades of experience with clients like you, means **shorter turnaround times and fewer reworks** to correct mistakes.

Tired of errors in data or transactional relationships that lead to difficulty completing projects? Landair is different, with:



Strict quality checks for **accurate data** that meets specifications.



Experience in your industry – **recognising issues** other surveyors miss.



Low staff turnover – **knowledge isn't concentrated** in individuals.



A long history in surveying – we've **seen it all** and nothing surprises us.



Alternative **solutions** for challenging projects.



Ownership mentality – **never moving on** until the job's done.



A 'No BS' attitude – we always do **what we say** we will.



Smaller and focused teams gives you a **more personal** service.



# Our successful projects.

Work with a surveyor that's been on the ground for over 50 years. **Major organisations** – from Victoria's Department of Transport to Cleanaway – trust us with their spatial projects.

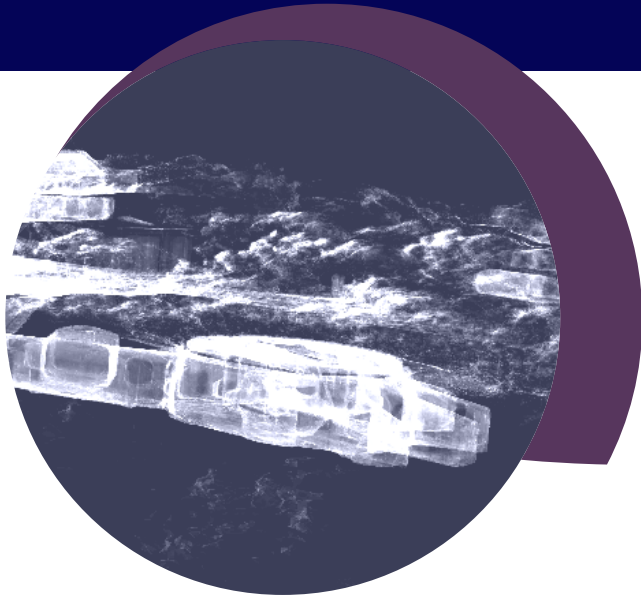




# Fort Nepean

Client  
**Conservation Studio**

Sector  
**Architecture and heritage**



Due to the scarcity of as-built records for this historical military complex and important tourist location, Landair Surveys was tasked to deliver over 600 scans of point cloud data that showed – for the first time in 3D – the site’s buildings, gunneries, observation posts, engine rooms and complex tunnels.

**Key service:**

- ✓ 3D laser scanning

**Key outcomes:**

- ✓ 3D colourised point cloud
- ✓ Online virtual viewer

# Statewide Planned Burns Photography

Client  
**Department of Environment, Land, Water and Planning – Victoria**

Sector  
**Government geospatial imagery**



As part of a multi-year project, Landair captured imagery of controlled burn sites across Victoria for fire severity and extent mapping. It required significant flexibility and operation in remote regions – with narrow capture and processing windows due to weather.

**Key service:**

- ✓ Aerial photography

**Key outcomes:**

- ✓ Four-band orthophotography tiles
- ✓ Overview mosaics
- ✓ Associated metadata

# Cosgrove Landfill

Client  
**Greater Shepperton City Council**

Sector  
**Landfill operations**



At the Cosgrove Landfill, Landair has created a unified spatial data archive, aligning hundreds of historical files on a single coordinate system for easy access and continuity. We've also developed a life-of-landfill model to help the council forecast capacity – for long-term cell expansion planning and final capping.

**Key service:**

- ✓ Volumetric surveys
- ✓ Infrastructure surveys
- ✓ Life-of-landfill calculations

**Key outcomes:**

- ✓ Accurate volume assessments
- ✓ As-built data for records
- ✓ Dynamic life-of-landfill models

# Eastlink Resurfacing Project

Client  
**ConnectEast and Downer Group**

Sector  
**Construction and engineering**



Landair Surveys supported the resurfacing of Eastlink, contributing over 2,500 surveying hours across three consecutive summers. With a partnership dating back to 2004, Landair's expertise in road surface analysis and spatial data has been integral to the project's development and ongoing maintenance.

**Key service:**

- ✓ Existing conditions surveys
- ✓ As-constructed pick-ups
- ✓ Quality assurance checks
- ✓ Toll-point setout surveys

**Key outcomes:**

- ✓ Road analysis plans
- ✓ As-built survey plans
- ✓ Setout plans

## Our leadership team.

The diverse Landair team consists of **more than 20** licensed and registered surveyors, photogrammetrists, CAD specialists, technicians and more.



**Erik Birzulis**  
Managing Director

With 30+ years in land, engineering and aerial surveying, Erik guides Landair in building successful long-term relationships. He leads our team of skilled professionals to deliver accurate results.



**Ray Cox**  
Director

With over 20 years' experience across all aspects of land and engineering surveying, Ray provides senior level supervision for Landair's laser scanning, RPA (drone) and landfill surveying teams.



**Trent Webb**  
Director & Survey Operations Manager

A surveying expert of more than 20 years, Trent specialises in cadastral surveying – registered in both Victoria and Queensland. He provides senior supervision for all types of surveys within our team.

## Our commitments.

You're right to expect more from your surveying partner. We want you to be **confident in our data** and in us as both spatial experts and members of the community.

ISO:9001 certified **Quality Management System** to ensure consistent service – independently audited every year by the globally recognised BSI Group.

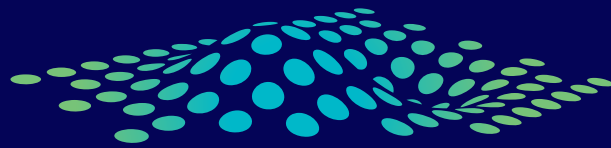
Comprehensive **Occupational Health and Safety** policies and procedures – including inductions, Safe Work Method Statements and first aid training.

**Carbon neutral** since 2019 – actively minimising emissions and purchasing Gold Standard Voluntary Emissions Reduction offsets.

Proud supporters of **The Smith Family**, who help disadvantaged young people – sponsoring one child a year for every full-time equivalent employee



Talk to the surveying professionals who  
**know your industry and projects.**



**Landair**  
Surveys

1300 130 158 | [info@landair.com.au](mailto:info@landair.com.au)

**[landair.com.au](http://landair.com.au)**



**Melbourne** (head office)

1/87-91 Heatherdale Road  
Ringwood VIC 3134

**Sydney**

Suite 18, 12 Tryon Road  
Lindfield NSW 2070