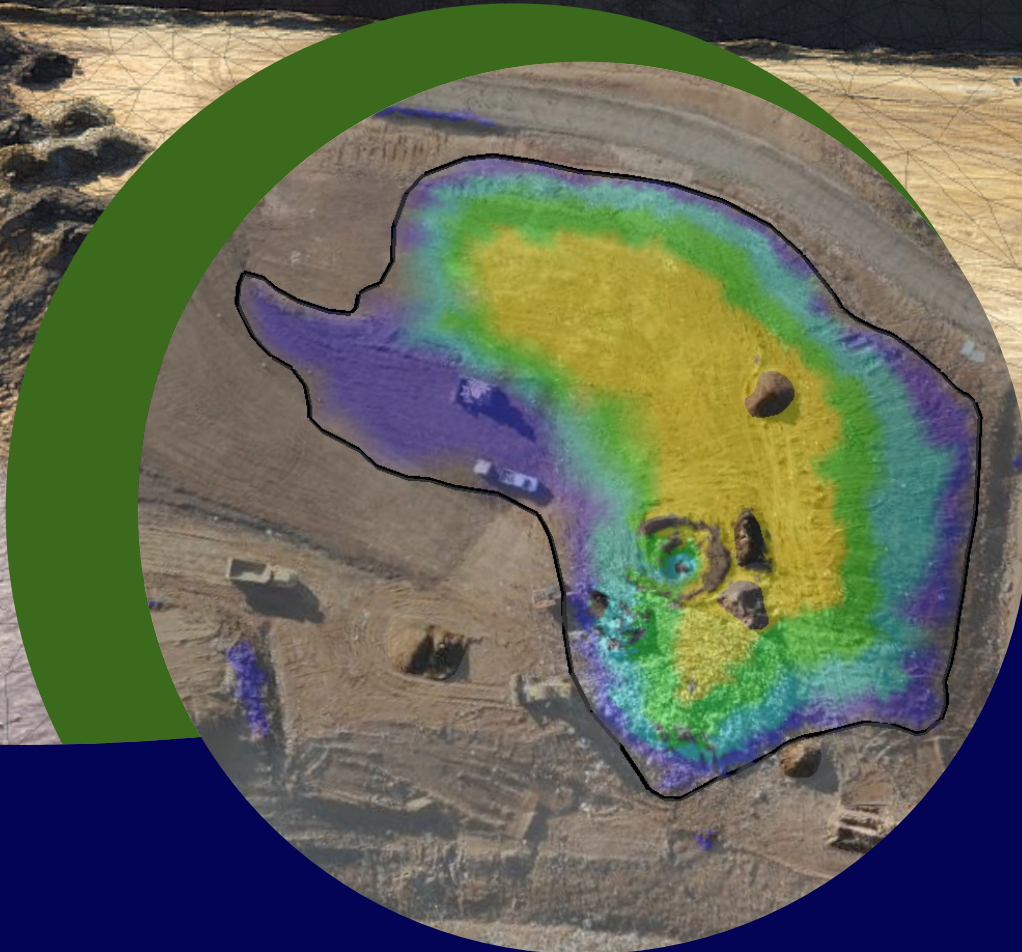


**Landair**  
Surveys



Surveying and spatial solutions for

# Landfill operators

For **40+ years**, Landair Surveys has worked with landfill operators across Victoria and New South Wales to enhance site management, compliance and planning with precise and insightful data that's easy to interpret and action.

Learn more at [landair.com.au/our-solutions/for-landfills](https://landair.com.au/our-solutions/for-landfills)

# Why choose Landair Surveys

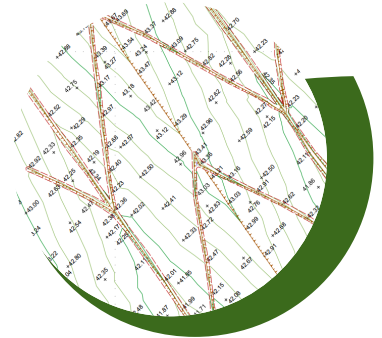
Landair goes beyond data collection. We prioritise clear, accessible presentation and **practical insights** to improve day-to-day landfill operations. This means that we:



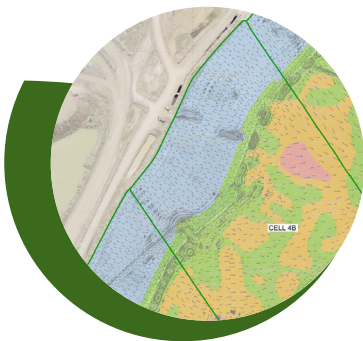
Share data in formats that are easier to understand and use every day for decision-making.



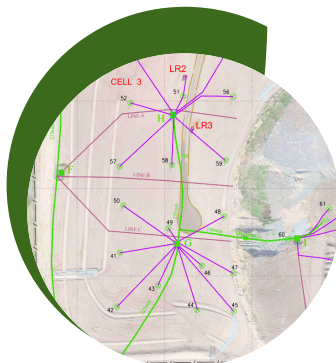
Provide overlays, online viewers and data exports compatible with the platforms you use.



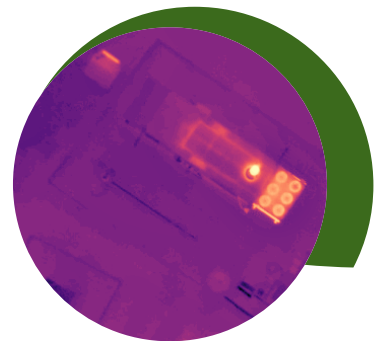
Align historical survey data to a consistent map grid, creating a single reference file.



Prevent errors by seamlessly integrating data from multiple sources.



Work with operators to help meet their license requirements for hotspot monitoring.



Capture thermal drone imagery and create heat maps to comply with safety standards.

# How we support your project

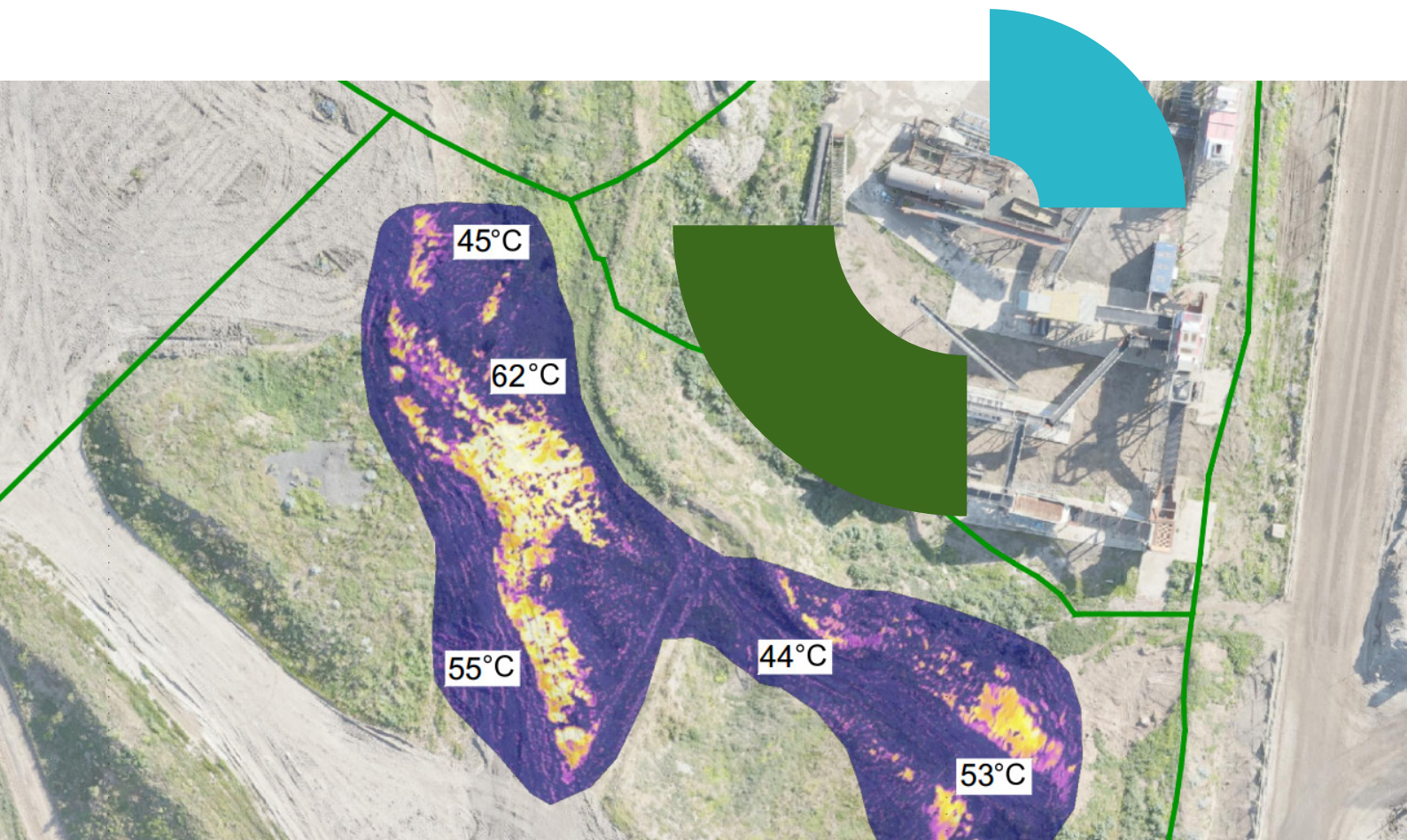
Managing a landfill site has unique challenges. We work with you to not just meet your obligations, but also to develop more sustainable operations.

## We capture your spatial data using...

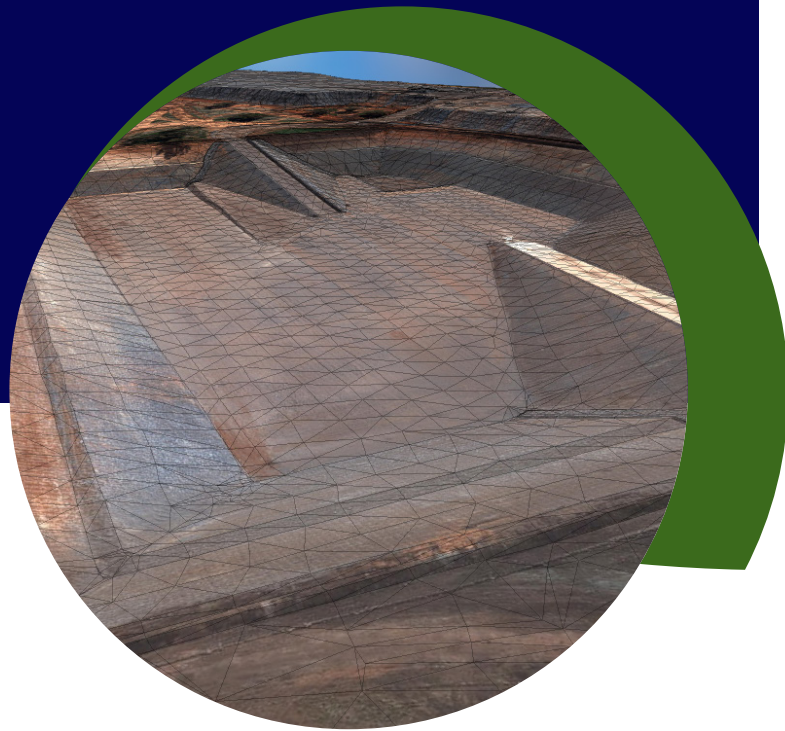
- ✓ Volumetric surveys
- ✓ Mapping surveys
- ✓ Cell construction surveys
- ✓ Site infrastructure surveys

## We deliver actionable data as...

- ✓ Volumetric reports
- ✓ Hotspot detection
- ✓ As-built and setout plans
- ✓ 3D surface models



# See our success on a project like yours



Project  
**Sunshine Landfill**

Client  
**The Barro Group**

Completed  
**Ongoing since 2011**

Location  
**Kealba, Victoria**



*I'm very pro-Landair Surveys. I won't go anywhere else. They're accurate and professional, and they know what landfill managers need. If there's ever a problem, all I do is let them know and they'll resolve it quickly."*

**Nino Frasca**

Landfill Manager at The Barro Group

Landair Surveys has provided **ongoing support** for Sunshine Landfill operations through monthly ground surveys and half-yearly whole-site flyovers. These surveys ensure compliance, optimise waste management and support site expansion planning.

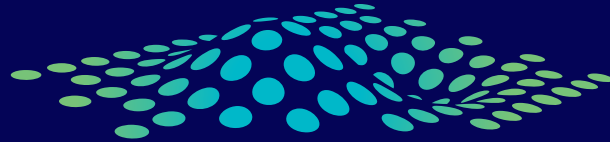
Key challenges addressed include constructing sideliner clay barriers against uneven rock walls and maximising practical waste capacity. Using 3D laser scanning, Landair created precise virtual models of irregular rock faces to guide clay thickness and runoff grading for auditor approval

and compliance. Additionally, proposed design surfaces helped relocate haul roads, significantly increasing usable airspace and delaying the need for new cell construction. These innovative solutions showcase Landair's expertise in solving **complex landfill challenges**.

## See our **landfill partners**

Landair Surveys has applied innovative solutions to tackle the complex demands of landfill operations across **Victoria and New South Wales**.





# Landair

Surveys

1300 130 158 | [info@landair.com.au](mailto:info@landair.com.au)

**[landair.com.au](http://landair.com.au)**



**Melbourne** (head office)

1/87-91 Heatherdale Road  
Ringwood VIC 3134

**Sydney**

Suite 18, 12 Tryon Road  
Lindfield NSW 2070